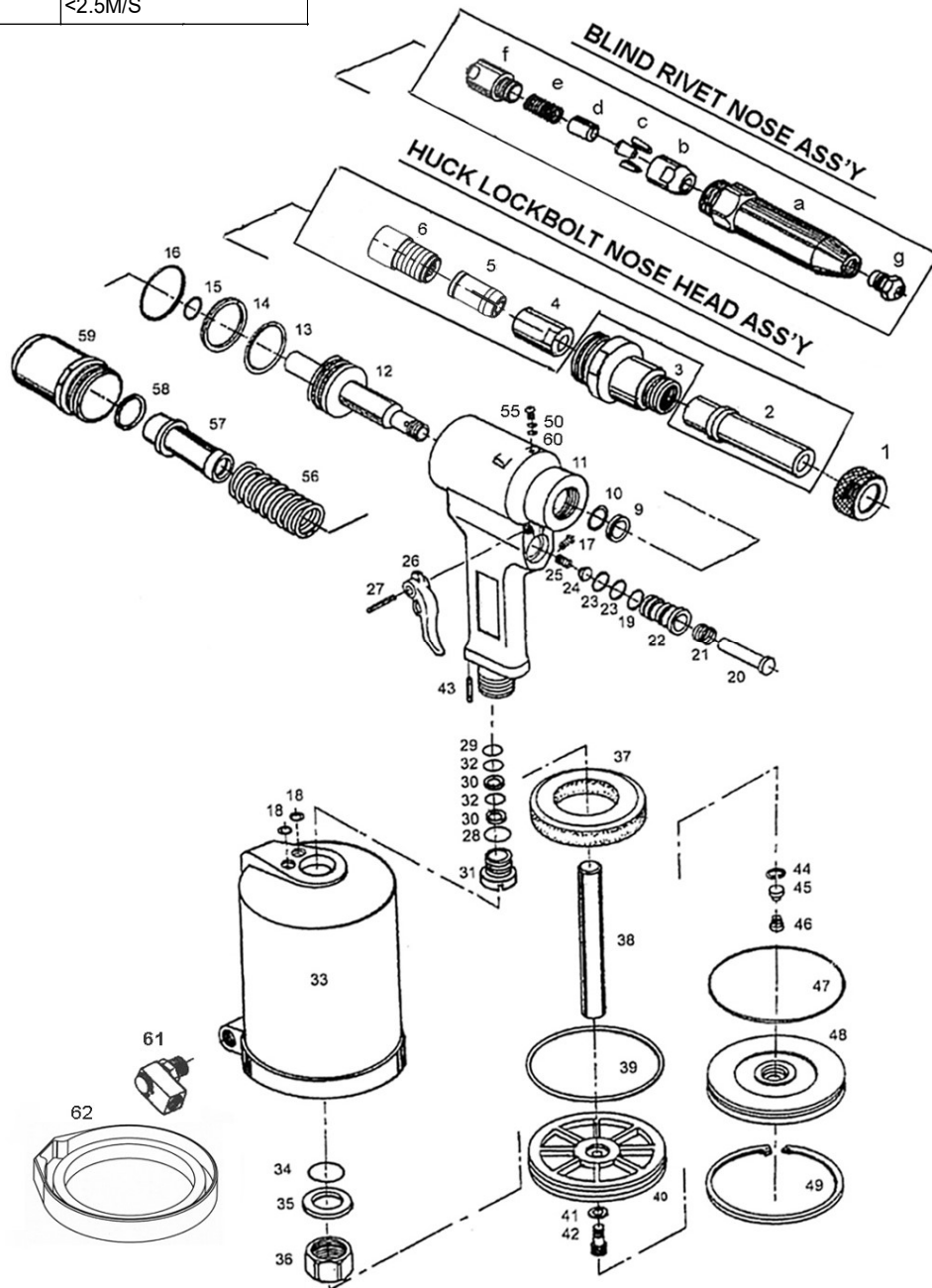


# BP82E 3/16", 1/4" Hydraulic Lockbolt Tool or Riveter

## SPECIFICATIONS

Model No: BP82E	
Huckbolt Capacity	All Material 3/16", 1/4" 4.8, 6.4 mm
Traction Power	5500 lbs 2500kg
Stroke	7/8" 23mm
Operating Air Pressure	90-110 PSI
Air Consumption	0.14Cuft. 3.9 / Stroke
Height	13-1/2" 342mm
Weight	6.5 lbs 3.5 kg
Min. Hose Size	3/8" I.D.
Air Inlet	1/4" NPT 1/4"PT
Sound Pressure	80 DBA
Vibration	<2.5M/S



# BP82E 3/16", 1/4" Hydraulic Lockbolt Tool or Riveter

B1501-HF22 '5/2014A3

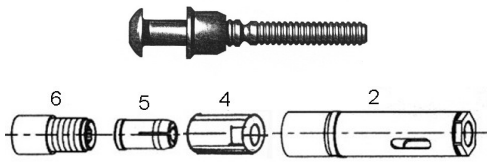
INDEX NO.	PART NO.	DESCRIPTION
1	<b>72061E</b>	<b>Retaining Nut</b>
3	82015L	Anvil Adaptor
9	19331	Back Up Ring Seal (2)
10	19341	O-Ring Seal (2)
11	82002	Hydraulic Section
12	18251	Hydraulic Piston
13	19330	O-Ring Seal (2)
14	19342	Back Up Ring Seal (2)
15	19369	O-Ring Seal
16	19332	O-Ring Seal
17	19320	Screw Plug
18	R5X1.5	O-Ring Seal (2)
19	10548	O-Ring Seal
20	19339	Valve Tube
21	11541	Valve Spring
22	19338	Valve Seat
23	19336	O-Ring Seal (2)
24	10442	Valve Plate
25	10544	Valve Pressure Spring
26	19304	Trigger
27	23105	Roll Pin
28	19328	O-Ring Seal
29	19327	O-Ring Seal
30	18243	Back Up Ring Seal (2)
31	18257	Hydraulic Plug
32	19329	O-Ring Seal (2)
33	82001	Air Cylinder
34	R30X3.5	O-Ring (#19326)
35	19344	Washer
36	19321	Lock Nut
37	11530	Damping Ring
38	18222	Piston Rod
39	19324	O-Ring Seal
40	19334	Piston Disc
41	11526	Spring Washer
42	11527	Piston Head Lock Screw
43	76050	Roll Pin

INDEX NO.	PART NO.	DESCRIPTION
44	19314	Retaining Ring
45	19312	Rubber Plate
46	19313	Spring
47	19325	O-Ring Seal
48	19335	Cylinder Base
49	19311	Retaining Ring
50	400017A	Fill Washer
55	02171	Oil Plug
56	19353	Spring
57	19352	Guide Tube
58	193169	O-Ring Seal
59	19310	Rear Gland
60	02197	O-Ring Seal
<b>61</b>	<b>021470</b>	<b>Universal Joint Kit</b>
62	820117	Rubber Cushion
<b>*** Accessories *** ( Not Shown )</b>		
	54005	Hex. Wrench
	54059	Hanging Ring
	02160	Safety Cap
	381K31	Wrench 14/19mm (2)
<b>***Nose Head Ass'y for OPTIONAL</b>		
	<b>TE18290</b>	<b>1/4"Nose Ass'y</b>
<b>**</b>	<b>TE18290MA</b>	<b>1/4" Nose Ass'y</b>
	<b>T18190</b>	<b>3/16" Nose Ass'y</b>
	<b>TE18190MA</b>	<b>3/16" Nose Ass'y</b>
	<b>T11790</b>	<b>Blind Rivet Nose Ass'y</b> <b>( 5/32", 3/16", 1/4")</b>
<b>*** Extended Head Ass'y for OPTIONAL</b>		
	<b>TE18290E6</b>	1/4" ---- 6"Extended
	<b>TE18290MAE6</b>	1/4" ---- 6"Extended
	<b>T18190E6</b>	3/16" ---- 6"Extended
	<b>TE18190MAE6</b>	3/16" ---- 6"Extended

# BP82E 3/16", 1/4" Hydraulic Lockbolt Tool or Riveter

B1501-HF22 '5/2014A3

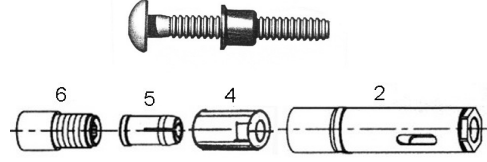
## HUCK LOCKBOLT NOSE HEAD ASS'Y



### TE18290 1/4" NOSE ASS'Y

apply for \* HUCK C6L Fastener  
\* AVDEL Avdelok

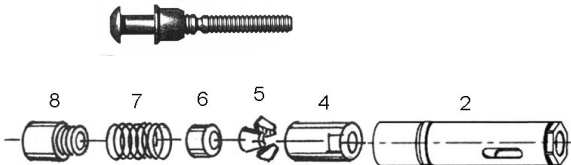
Index	Part No.	Description
2	82016	Swaging Anvil
4	72009	Collet
5	82008S	Jaws Set
6	820092B	Collet Coupler
6	820092BF	Collet Coupler(*Optional)



### TE18290MA 1/4" NOSE ASS'Y

apply for \*HUCK Magna- Grip  
\*AVDEL Maxlok

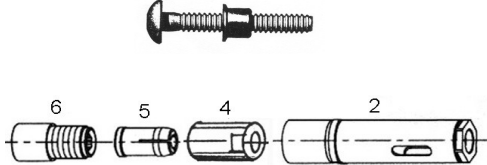
Index	Part No.	Description
2	82016MG	Swaging Anvil
4	72009	Collet
5	82008MGS	Jaws Set
6	820092B	Collet Coupler
6	820092BF	Collet Coupler(*Optional)



### T18190 3/16" NOSE ASS'Y

apply for \*HUCK C6L Fastener  
\*AVDEL Avdelok

Index	Part No.	Description
2	720316	Swaging Anvil
4	72009	Collet
5	71508	Jaws (3/16 Unitized)
6	72007S	Follower
7	72005	Spring (No Spring/ Unitized Jaw)
8	82092A	Collet Coupler



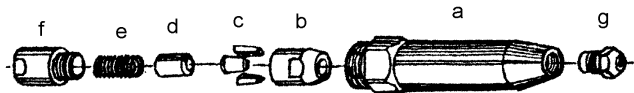
### T18190MA 3/16" NOSE ASS'Y

apply for \*HUCK Magna- Grip  
\*AVDEL Maxlok

Index	Part No.	Description
2	720316MG	Swaging Anvil
4	72009	Collet
5	71508MGS	Jaws Set
6	820092B	Collet Coupler
6	820092BF	Collet Coupler (*Optional)

## T11790 BLIND RIVET NOSE ASS'Y ( 5/32", 3/16" , 1/4" )

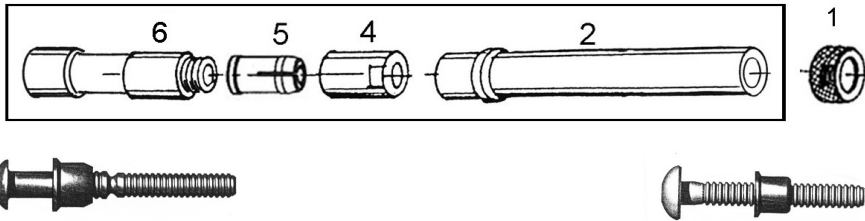
Index	Part No.	Description
a.	11715	Head
b.	117R09	Jaw Housing
c.	11508	Jaws (3)
d.	11707R	Jaw Pusher
e.	11505	Spring
f.	11706	Jaw Housing Coupler
g.	11519	5/32" Nosepiece
	11517	3/16" Nosepiece
	11516	1/4" Nosepiece
	11717HK	3/16" Nosepiece for Magna-Lok ** OPTIONAL
	11718HK	1/4" Nosepiece for Magna-Lok ** OPTIONAL
	11714AV	3/16"Nosepiece for *Monobolt ** OPTIONAL
	11715AV	1/4" Nosepiece for *Monobolt ** OPTIONAL



# BP82E 3/16", 1/4" Air Hydraulic Lockbolt Tool or Riveter

B1501-HF22 '5/2014A3

## HUCK LOCKBOLT **6" EXTENDED** NOSE HEAD ASS'Y



### **TE18290E6 1/4" EXTENDED NOSE ASS'Y**

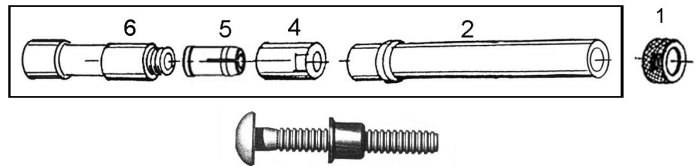
apply for \* HUCK C6L Fastener  
\* AVDEL Avdelok

Index	Part No.	Description
1	72061E	Retaining Nut
2	<b>82016E6.</b>	Swaging Anvil
4	72009	Collet
5	82008S	Jaws Set
6	<b>82092AE6</b>	<b>Collet Coupler</b>

### **TE18290MAE6 1/4" EXTENDED NOSE ASS'Y**

apply for \*HUCK Magna- Grip  
\*AVDEL Maxlok

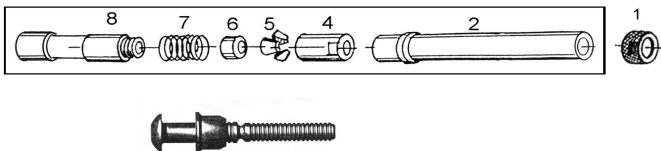
Index	Part No.	Description
1	72061E	Retaining Nut
2	<b>82016MGE6</b>	Swaging Anvil
4	72009	Collet
5	82008MGS	Jaws Set
6	<b>82092AE6</b>	<b>Collet Coupler</b>



### **TE18190MAE6 3/16" EXTENDED NOSE ASS'Y**

apply for \*HUCK Magna- Grip  
\*AVDEL Maxlok

Index	Part No.	Description
1	72061E	Retaining Nut
2	<b>720316MGE6</b>	<b>Swaging Anvil</b>
4	72009	Collet
5	71508MGS	Jaws Set
6	<b>82092AE6</b>	<b>Collet Coupler</b>



### **T18190E6 3/16" EXTENDED NOSE ASS'Y**

apply for \*HUCK C6L Fastener  
\*AVDEL Avdelok

Index	Part No.	Description
1	72061E	Retaining Nut
2	<b>720316E6.</b>	<b>Swaging Anvil</b>
4	72009	Collet
5	71508	Jaws (Unitized)
6	72007S	Follower
7	72005	Spring
8	<b>82092AE6</b>	<b>Collet Coupler</b>