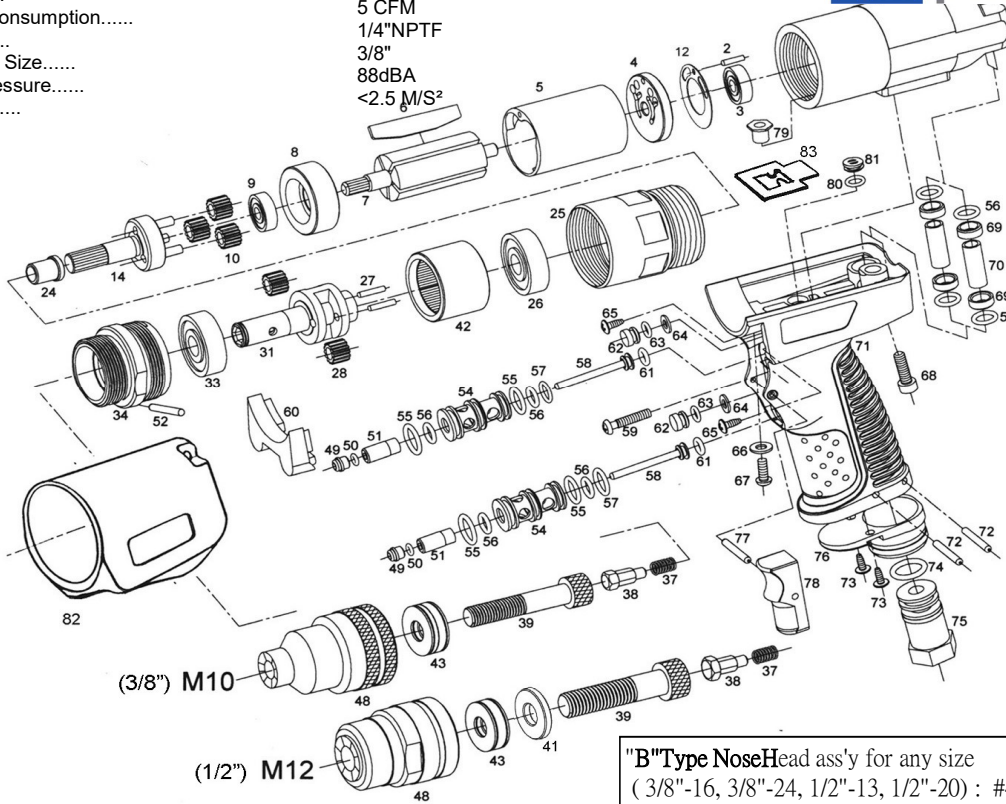




SPECIFICATIONS

Max.Rivet Nut Setting Capacity.....
 Free Speed.....
 Weight.....
 Avg. Air Consumption.....
 Air Inlet.....
 Mini-Hose Size.....
 Sound Pressure.....
 Vibration.....

3/8"-16, 3/8"-24, 1/2"-13, 1/2"-20
 200RPM
 1.3KGS
 5 CFM
 1/4"NPTF
 3/8"
 88dBA
 <2.5 M/S²



"B"Type NoseHead ass'y for any size
 (3/8"-16, 3/8"-24, 1/2"-13, 1/2"-20) : #48, #43 , #39,
 #38, #37

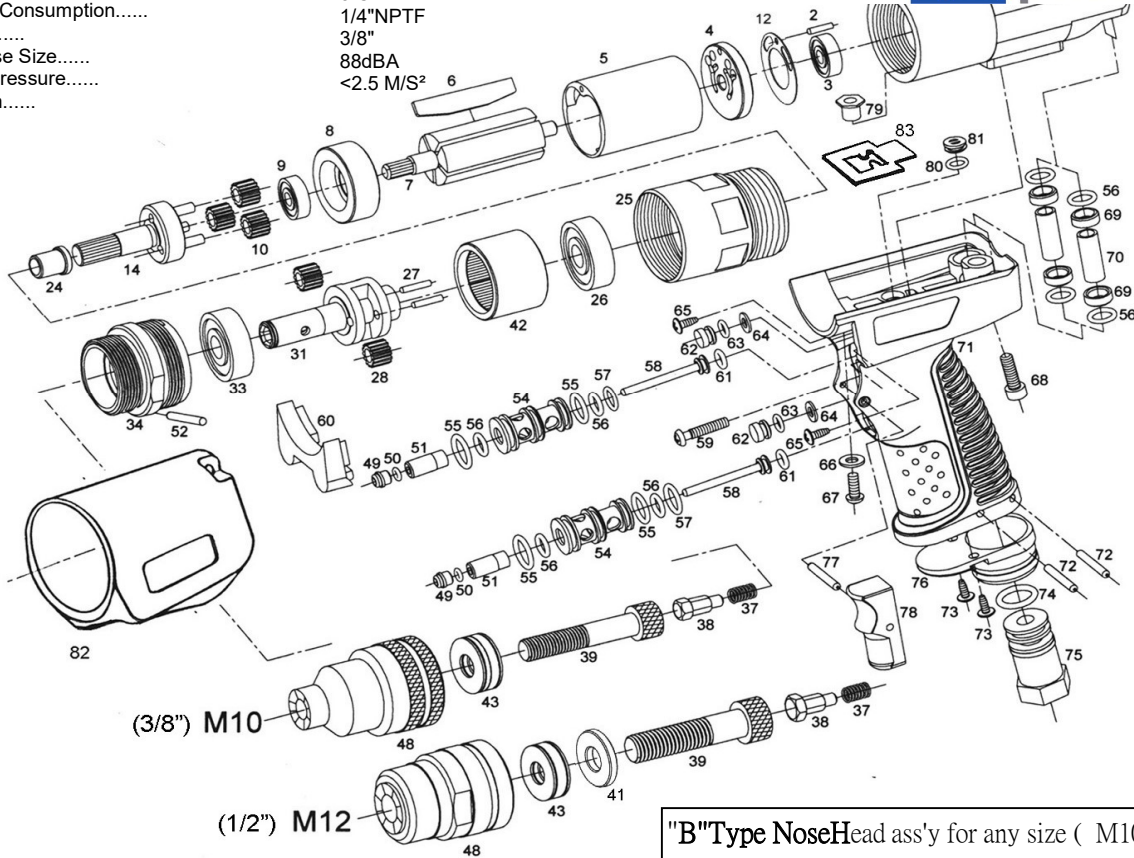
B1501-HF22 3/2012C4

Index No.	Part No.	Description	Index No.	Part No	Description	Index No.	Part No	Description
1	300360	Motor Housing	41	W03824F	Bolt 3/8"-24	67	BSM5X12	Screw
2	N2.5X10	Pin	42	W12013	Bolt 1/2"-13	68	HSM5X20	Screw
3	25004	Ball Bearing	43	W12020F	Bolt 1/2"-20	69	30011	Bushing (4)
4	300114	Rear Plate	44	200631-2	Washer (1/2")	70	30025	Tube (2)
5	300109	Cylinder	45	35012A	Internal Gear	71	30003	Handle
6	300107	Blade (5)	46	B51100	Ball Bearing (10x24-3/8")	72	SP3X25	Roll Pin (2)
	300107F	Blade (Free Oil Blade)	47	NB1528	Needle Bearing (15x28-1/2")	73	WS3.5X15	Screw (2)
7	300102U	Rotor (8T)	48	60038	Nut Anvil (3/8")	74	19336	O-Ring(Ø13.8X2.4)
8	300108	Front Plate		6001-2	Nut Anvil (1/2")	75	30018	Air Inlet Bushing
9	608	Ball Bearing	49	300061	Sleeve Bushing (2)	76	30027	Diffuser Exhaust
10	35018B	Planet Gear(18T) (3)	50	R3X15	O-Ring(Ø3X1.5) (2)	77	SP2.5X20	Pin
12	36011	Motor Gasket	51	30006	Sleeve (2)	78	30012	Trigger
14	35011A	Planet Cage(7T)	52	35029	Pin	79	300M5	Nut
24	35016A	Bushing	54	30005	Throttle Bushing (2)	80	R5X1.5	O-Ring(Ø5X1.5) (2)
25	300115	Housing	55	R115X2	O-Ring(Ø11.5X2) (4)	81	30009	Plug (2)
26	35060	Ball Bearing	56	R7X18	O-Ring(Ø7X1.8) (8)	83	36248	Gasket
27	35059	Planet Pin (2)	57	35003	O-Ring (2)	***ACCESSORIES ***		
28	35018B	Planet Gear(18T)(2)	58	30007	Valve stem (2)		T1010S	Air Regulator (T1010B)
31	35010W	Planet Cage	59	BSM5X25	Screw		350W34	Wrench 34mm
33	35069	Ball Bearing	61	R5X19	O Ring (Ø5X2) (2)		350W38	Wrench 38mm
34	35014	Screw Housing	62	30086	Plug (2)	39	1 x Any size Bolt	
37	35076	Spring	63	R5X1.5	O-Ring(Ø5X1.5) (2)	*** OPTIONAL ACCESSORY ***		
38	603816	Hexagon Bit (3/8")	64	R8X65X16	Washer(Ø8X6.5x1.6) (2)	60	30059	Rubber Cap
	601213	Hexagon Bit (1/2")	65	25020	Screw (2)	82	30091	Rubber Cover for Housing
39	W03816	Bolt 3/8"-16	66	300W5	Washer			

SPECIFICATIONS

Max.Rivet Nut Setting Capacity.....
 Free Speed.....
 Weight.....
 Avg. Air Consumption.....
 Air Inlet.....
 Mini-Hose Size.....
 Sound Pressure.....
 Vibration.....

M12
 200RPM
 1.3KGS
 5 CFM
 1/4"NPTF
 3/8"
 88dBA
 <2.5 M/S²



"B"Type NoseHead ass'y for any size (M10 , M12) :

B1501-HF22 7/2011C3

Index No.	Part No.	Description	Index No.	Part No	Description	Index No.	Part No	Description
1	300360	Motor Housing	39	M10015	Bolt M10	67	BSM5X12	Screw
2	N2.5X10	Pin		M12175	Bolt M12	68	HSM5X20	Screw
3	25004	Ball Bearing	41	20063	Washer (M12)	69	30011	Bushing (4)
4	300114	Rear Plate	42	35012A	Internal Gear	70	30025	Tube (2)
5	300109	Cylinder	43	B51100	Ball Bearing 10X24, M10	71	30003	Handle
6	300107	Blade (5)		NB1226	Needle Bearing M12	72	SP3X25	Roll Pin (2)
	300107F	Blade (Free Oil Blade)(5)	48	60010M	Nut Anvil M10	73	WS3.5X15	Screw (2)
7	300102U	Rotor (8T)		60012M	Nut Anvil M12	74	19336	O-Ring(Ø13.8X2.4)
8	300108	Front Plate	49	300061	Sleeve Bushing (2)	75	30018	Air Inlet Bushing
9	608	Ball Bearing	50	R3X15	O-Ring(Ø3X1.5) (2)	76	30027	Diffuser Exhaust
10	35018B	Planet Gear(18T) (3)	51	30006	Sleeve (2)	77	SP2.5X20	Pin
12	36011	Motor Gasket	52	35029	Pin	78	30012	Trigger
14	35011A	Planet Cage(7T)	54	30005	Throttle Bushing (2)	79	300M5	Nut
24	35016A	Bushing	55	R115X2	O-Ring(Ø11.5X2) (4)	80	R5X1.5	O-Ring(Ø5X1.5) (2)
25	300115	Housing	56	R7X18	O-Ring(Ø7X1.8) (8)	81	30009	Plug (2)
26	35060	Ball Bearing	57	35003	O-Ring (2)	83	36248	Gasket
27	35059	Planet Pin (2)	58	30007	Valve stem (2)	***ACCESSORIES***		
28	35018B	Planet Gear(18T)(2)	59	BSM5X25	Screw		T1010S	Air Regulator (T1010B)
31	35010W	Planet Cage	61	R5X19	O Ring (Ø5X2) (2)		350W34	Wrench 34mm
33	35069	Ball Bearing	62	30086	Plug (2)		350W38	Wrench 38mm
34	35014	Screw Housing	63	R5X1.5	O-Ring(Ø5X1.5) (2)	39	1 x Any size Bolt	
37	35076	Spring	64	R8X65X16	Washer(Ø8X6.5x1.6) (2)	*** OPTIONAL ACCESSORY ***		
38	600010	Hexagon Bit M10	65	25020	Screw (2)	60	30059	Rubber Cap
	600B12	Hexagon Bit M12	66	300W5	Washer	82	30091	Rubber Cover for Housing