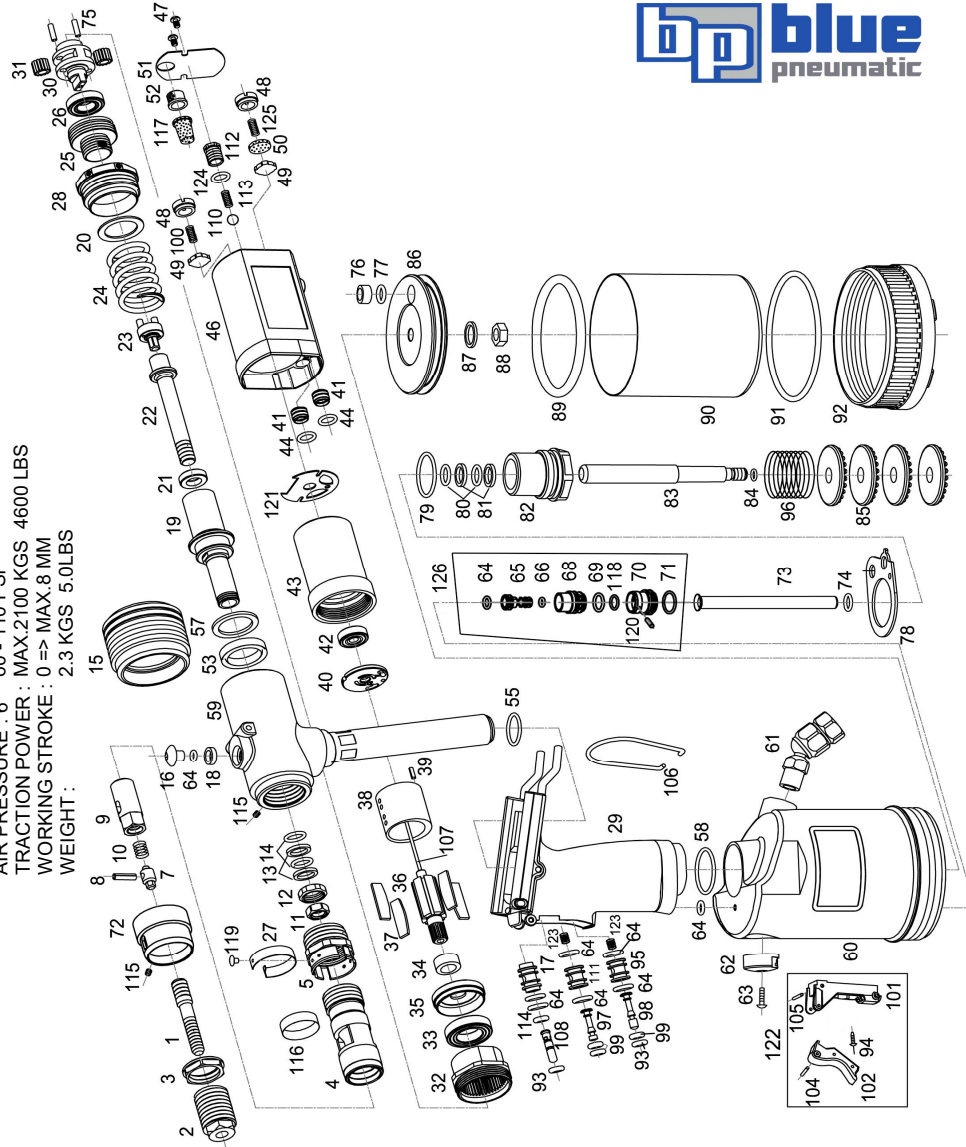


BP-60C/S Air Hydraulic Rivet Nut Tool (Inch size bolt)

12/2013B2



SPECIFICATIONS :
 WORK CAPACITY : (#6-32) #8-32, #10-24, #10-32, 1/4"-20, 5/16"-18, 3/8"-16, 1/2"-13
 AIR PRESSURE : 60 - 110 PSI
 TRACTION POWER : MAX:2100 KGS 4600 LBS
 WORKING STROKE : 0 => MAX:8 MM
 WEIGHT : 2.3 KGS 5.0LBS

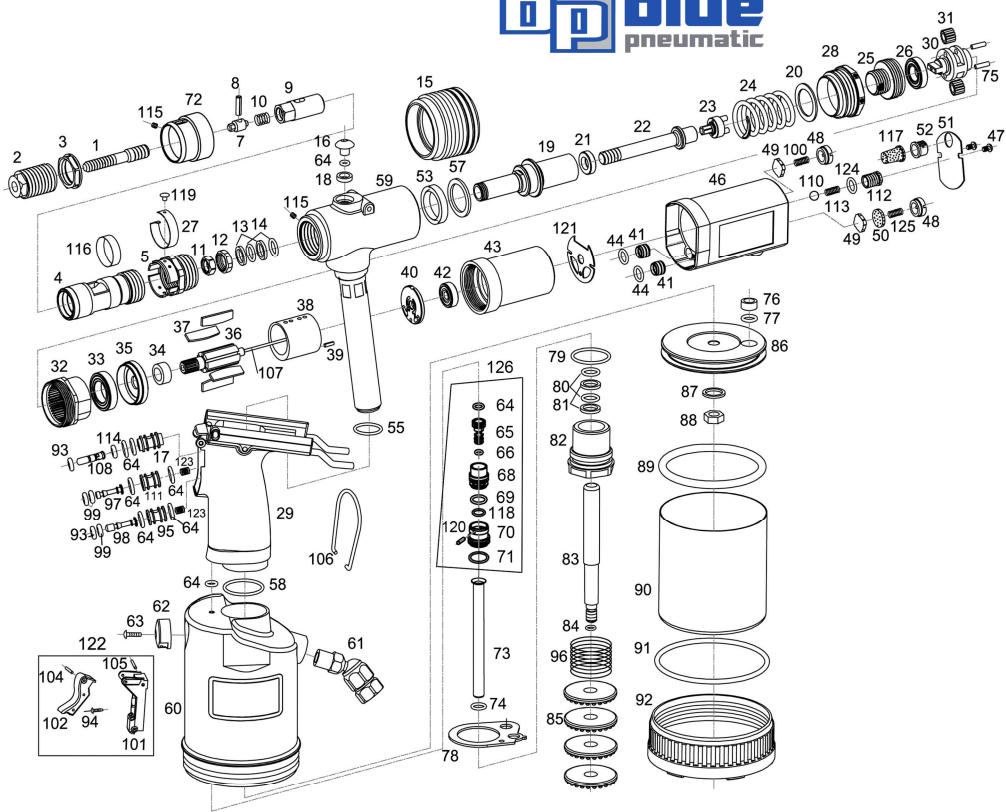


BP-60C/S Air Hydraulic Rivet Nut Tool (Inch size bolt)

B1501-HF22 12/2013B2

INDEX NO.	PART NO.	DESCRIPTION	INDEX NO.	PART NO.	DESCRIPTION
1	6002B38-16N	Bolt 3/8"-16	81*	10558	O-Ring Washer (2)
2	62-38	Nut Anvil 3/8"	82	64057	Screw Plug
3	600021	Nut	83	600322	Plunger Rod
4	600660	Head	84	R5X15	O-Ring Seal
5	600658	Screw Seat	85	63030	Cushion (4)
7	600007	Hexagon Bit	86	63020	Piston
8	600041	Spring Pin	87	48047	Washer
9	6000082	Bushing	88	48048	Nut
10*	600076	Spring	89*	R70X57	O-Ring Seal
11	600009	Nut	90	63008	Cylinder /Cup
12	6000M14	Nut Ring	91*	R76X35	O-Ring Seal
13*	11502	Ring Washer (2)	92	63035	Cylinder Cap
14*	11554	X Ring Seal (2)	93	R1.9X12	O-Ring Seal (2)
15	600677	Rubber Cover	95	63009	Trigger Bush
16	02171	Oil Plug	96	600246	Spring
17	600619	Trigger Bush	97	600217	Trigger Stem
18	400017A	Fill Washer	98	600218	Trigger Stem
19	600612	Hydraulic Plunger	99*	R2X15	O-Ring Seal (3)
20	600629	Washer	100	19313	Spring
21	600620	Bushing	107	600687	Pin
22	600611	Shaft	108	600618	Trigger Stem
23	600666	Connector	110	600670	Steel Ball
24*	600645	Spring	111	600209	Trigger Bush
25	600669	Screw Bushing	112	600682	Screw Plug
26	B6901	Ball Bearing	113*	600697	Spring
27*	600656	Ring Spring	114*	R2.6X1.2	O-Ring Seal
28*	600671	Screw Bushing	115	6006M5	Screw (2)
29	630030V	Hydraulic Handle	116	600676	Sticker
30	600691	Gear Spindle (14T)	117	600096	Muffler Bush
31*	25323H	Gear (14T) (2)	118	R11X1.2	O Ring
32	600672	Ring Gear	119	6006119	Rivet
33	B608	Ball Bearing	120	SP2X17	Pin
34*	NB1014	Needle Bearing	121*	600662	Gasket
35	600693	Front Plate	123	600235	Spring (2)
36	600614	Rotor (14T)	124*	R7.5 x 15	O Ring
37*	600607	Blade (6)	125	23208	Valve Spring
38	600609	Cylinder			
39	25006	Pin	122	6003A-122	Trigger Assy
40	600230	End Plate			
41	6006631	Bushing (2)	Content:		
42	25004	Ball Bearing	index.94	Screw	
43	600661	Motor Housing	index.101	Trigger Seat	
44*	1156U	O-Ring Seal (2)	index.102	Trigger	
46	600063B0	Motor Housing Cover	index.104	Roll Pin	
47	600047	Screw (2)	index.105	Roll Pin	
48	600071	Screw Bushing (2)	126	68036AK	Valve Kit
49	19312	Rubber plate (2)	Incl.	#64, #65, #66, #68, #69, #70, #71, #118, #120	
50	600050	Valve Muffler			*** Accessories ***
51	600064	Valve Plate	1	6002B12-13N	Bolt 1/2"-13
52	600065	Exhaust Cap	1	6002B516-18N	Bolt 5/16"-18
53*	US2230	U Seal	*	6002B14-20N	Bolt 1/4"-20
55*	02170	O-Ring	1	6002B10N24N	Bolt #10 - 24
57*	600668	Washer	1	6002B10N32N	Bolt #10 - 32
58*	630356	O-Ring	1	6002B8N32	Bolt #8 - 32
59	6006020	Hydraulic Section Assy Inc. (Hyd. Section),(O ring),(Valve pipe)	2	62-12	Nut Anvil 1/2"
60	63029	Cylinder Body	2	62-516	Nut Anvil 5/16"
62	63031	Exhaust Cap	2	62-1420	Nut Anvil 1/4"
63	25020	Screw	2	62N10	Nut Anvil #10 (2)
64*	02197	O-Ring Seal (9)	2	62N8	Nut Anvil #8
65	68038A	Throttle Valve	3	600021	Nut (6)
66*	10512	O-Ring	61	T1020S	Universal Joint
68	68037A	Upper Bushing	106	54059	Hanging Ring
69*	10445	O-Ring	*	W24	Wrench 24/27mm
70	68036A	Lower Bush	*	54005	Hex. Wrench
71	25022	O-Ring	*	11790	Oil Syringe
72	600685	Head Bushing	*	WR1719	Wrench
73	63039	Valve Tube	*	600069	Pin
74*	630RW8X2	Rubber Washer			*** Optional Accessories ***
75	NR4X13	Needle (2)	1	6002B6N32	Bolt #6 - 32
76	63079	Bush	1	6002B10N24	Bolt #10 - 24
77	35039	O-Ring	1	6002B10N32	Bolt #10 - 32
78	63032	Pipe Washer	1	6002B14-20	Bolt 1/4"-20
79*	K266X24	O-Ring Seal	1	6002B516-18	Bolt 5/16"-18
80*	10554	O-Ring Seal (2)	1	6002B38-16	Bolt 3/8"-16
			1	6002B12-13	Bolt 1/2"-13
			2	62N6	Nut Anvil #6
					* REPAIR KIT

BP-60C/M Air Hydraulic Rivet Nut Tool (METRIC size bolt) 12/2013B2



SPECIFICATIONS :
 WORK CAPACITY :
 AIR PRESSURE :
 TRACTION POWER :
 WORKING STROKE :
 WEIGHT :

(M3), M4, M5, M6, M8, M10, M12
 60 - 110 PSI
 MAX.2100 KGS 4600 LBS
 0 => MAX.8 MM
 2.3 KGS 5.0LBS

BP-60C/M Air Hydraulic Rivet Nut Tool (METRIC size bolt)

INDEX NO.	PART NO.	DESCRIPTION
1	6002BM10N	Bolt M10
2	62M10	Nut Anvil M10
3	600021	Nut
4	600660	Head
5	600658	Screw Seat
7	600007	Hexagon Bit
8	600041	Spring Pin
9	6000082	Bushing
10*	600076	Spring
11	600009	Nut
12	6000M14	Nut Ring
13*	11502	Ring Washer (2)
14*	11554	X Ring Seal (2)
15	600677	Rubber Cover
16	02171	Oil Plug
17	600619	Trigger Bush
18	400017A	Fill Washer
19	600612	Hydraulic Plunger
20	600629	Washer
21	600620	Bushing
22	600611	Shaft
23	600666	Connector
24*	600645	Spring
25	600669	Screw Bushing
26	B6901	Ball Bearing
27*	600656	Ring Spring
28	600671	Screw Bushing
29	630030V	Hydraulic Handle Seat
30	600691	Gear Spindle (14T)
31*	25323H	Gear (14T) (2)
32	600672	Ring Gear
33	B608	Ball Bearing
34*	NB10.14	Needle Bearing
35	600693	Front Plate
36	600614	Rotor (14T)
37*	600607	Blade (6)
38	600609	Cylinder
39	25006	Pin
40	600230	End Plate
41	6006631	Bushing (2)
42	25004	Ball Bearing
43	600661	Motor Housing
44*	11560	O-Ring Seal (2)
46	6000638U	Motor Housing Cover
47	600047	Screw (2)
48	600071	Screw Bushing (2)
49	19312	Rubber plate (2)
50	600050	Valve Nuttler
51	600064	Valve Plate
52	600065	Exhaust Cap
53*	US2230	U Seal
55*	02170	O-Ring
57*	600668	Washer
58*	630356	O-Ring
59	6006020	Hydraulic Section Assy Inc. (Hyd. Section),(O ring),(Valve pipe)
60	63029	Cylinder Body
62	63031	Exhaust Cap
63	25020	Screw
64*	02197	O-Ring Seal (9)
65	68038A	Throttle Valve
66*	10512	O-Ring
68	68037A	Upper Bushing
69*	10445	O-Ring
70	68036A	Lower Bush
71	25022	O-Ring
72	600685	Head Bushing
73	63039	Valve Tube
74*	630RW8X2	Rubber Washer
75	NR4X13	Needle (2)
76	63079	Bush
77	35039	O-Ring
78	63032	Pipe Washer
79*	R206X24	O-Ring Seal

INDEX NO.	PART NO.	DESCRIPTION
80*	10554	O-Ring Seal (2)
81*	10558	O-Ring Washer (2)
82	64057	Screw Plug
83	600322	Plunger Rod
84	R5X15	O-Ring Seal
85	63030	Cushion (4)
86	63020	Piston
87	48047	Washer
88	48048	Nut
89*	R70X57	O-Ring Seal
90	63008	Cylinder/Cup
91*	R76X35	O-Ring Seal
92	63035	Cylinder Cap
93	R1.9X12	O-Ring Seal (2)
95	63009	Trigger Bush
96	600246	Spring
97	600217	Trigger Stem
98	600218	Trigger Stem
99*	R2X15	O-Ring Seal (3)
100	19313	Spring
107	600687	Pin
108	600618	Trigger Stem
110	600670	Steel Ball
111	600209	Trigger Bush
112	600682	Screw Plug
113*	600697	Spring
114*	R2.6X1.2	O-Ring Seal
115	6006M5	Screw (2)
116	600676	Sticker
117	600096	Muffler Bush
118	R11X1.2	O Ring
119	6006119	Rivet
120	SP2X17	Pin
121*	600662	Gasket
123	600235	Spring (2)
124*	R7.5 x 15	O Ring
125	23208	Valve Spring
122	6003A-122	Trigger Ass'y
Content:		
index. 94	Screw	
index. 101	Trigger Seat	
index. 102	Trigger	
index. 104	Roll Pin	
index. 105	Roll Pin	
126	68036AK	Valve Kit
Incl.	#64, #65, #66, #68, #69, #70, #71, #118, #120	
*** Accessories ***		
1	6002BM12N	Bolt M12
1	6002BM8N	Bolt M8
1	6002BM6N	Bolt M6
1	6002BM5N	Bolt M5
1	6002BM4N	Bolt M4
2	62M12	Nut Anvil M12
2	62M8	Nut Anvil M8
2	62M6	Nut Anvil M6
2	62M5	Nut Anvil M5
2	62M4	Nut Anvil M4
3	600021	Nut (5)
61	11020S	Universal Joint
106	54059	Hanging Ring
*	W24	Wrench 24/27mm
*	54005	Hex. Wrench
*	11790	Oil Syringe
*	WR1719	Wrench
*	600069	Pin
*** Optional Accessories ***		
1	6002BM12	Bolt M12
1	6002BM10	Bolt M10
1	6002BM8	Bolt M8
1	6002BM6	Bolt M6
1	6002BM5	Bolt M5
1	6002BM4	Bolt M4
1	6002BM3	Bolt M3
2	62M3	Nut Anvil M3

* REPAIR KIT