

SL-2

1/4" AIR HYDRAULIC RIVETER

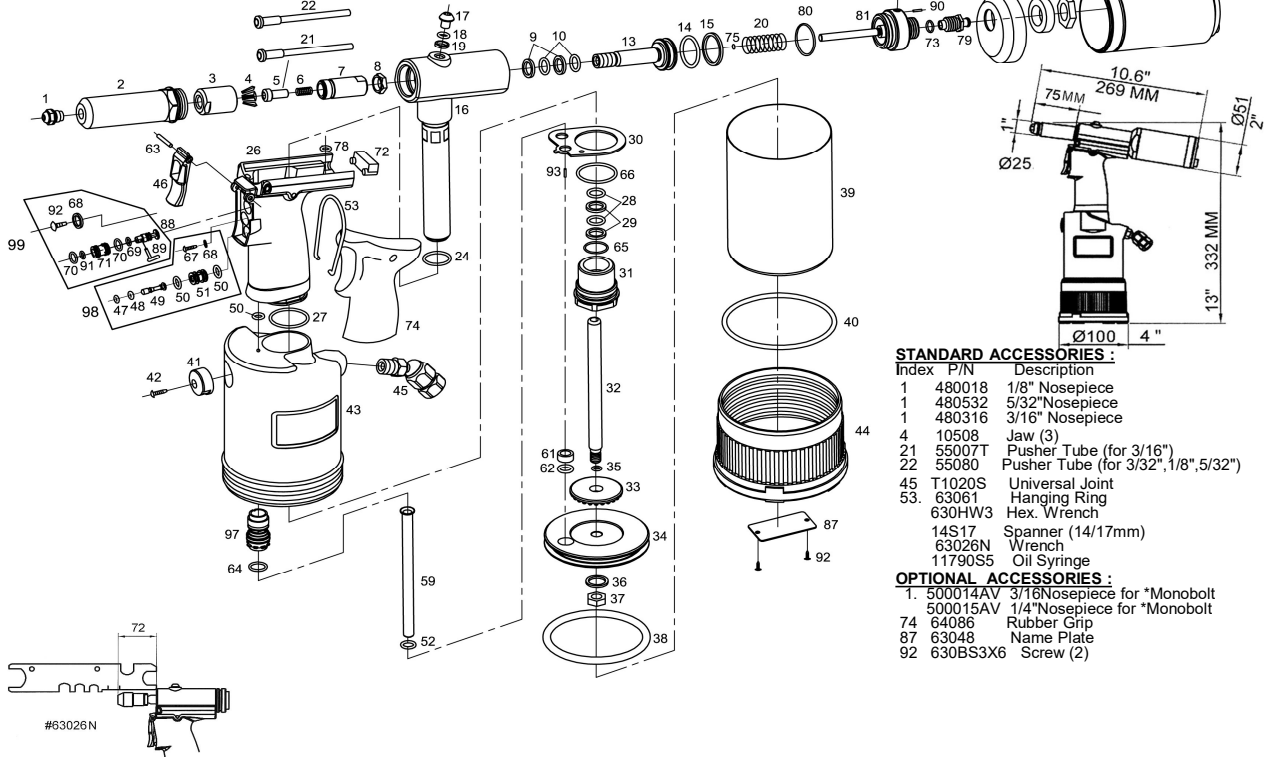
* with MANDREL COLLECT SYSTEM



SPECIFICATIONS :

Blind Rivet Setting Capacity--1/4", 3/16", 5/32", 1/8"
 Traction Power.....3500Lbs (1600kgs)
 Stroke 19mm (3/4")
 Operating Air Pressure..... 90 PSI
 Length :..... 332mm

Weight..... 3.8LBS(1.7kgs)
 Sound Pressure..... 75 dB(A)
 Vibration < 2.5 M/S²
 Air Consumption..... 3 L/ stroke



STANDARD ACCESSORIES :

- | Index | P/N | Description |
|-------|---------|--------------------------------------|
| 1 | 480018 | 1/8" Nosepiece |
| 1 | 480532 | 5/32" Nosepiece |
| 1 | 480316 | 3/16" Nosepiece |
| 4 | 10508 | Jaw (3) |
| 21 | 55007T | Pusher Tube (for 3/16") |
| 22 | 55080 | Pusher Tube (for 3/32", 1/8", 5/32") |
| 45 | T1020S | Universal Joint |
| 53 | 63061 | Hanging Ring |
| | 630HW3 | Hex. Wrench |
| | 14S17 | Spanner (14/17mm) |
| | 63026N | Wrench |
| | 11790S5 | Oil Syringe |

OPTIONAL ACCESSORIES :

- | | | |
|----|----------|-------------------------------|
| 1 | 500014AV | 3/16" Nosepiece for *Monobolt |
| | 500015AV | 1/4" Nosepiece for *Monobolt |
| 74 | 64086 | Rubber Grip |
| 87 | 63048 | Name Plate |
| 92 | 630BS3X6 | Screw (2) |

(MV640-1) B1501-HF22 1/2014E1

Index No.	Part No.	Description	Index No.	Part No.	Description	Index No.	Part No.	Description
1	500064	1/4" Nosepiece	*40	R78X2.8	O-Ring Seal	84	64011	Cap
2	54015	Head	41	63031	Exhaust Cap	85	64085	Nut
3	54009	Jaw Housing	42	WS3X10	Screw	86	640860	Mandrel Bottle Ass'y
4	10508	Jaws (3pcs/set)	43	63029	Cylinder Body	88	63053G	Valve Stem
5	11507	Jaw Pusher	44	64035	Cylinder Cap	89	63089	Lever
6	540005	Spring	46	63010V	Trigger Stem	90	PN1X8	Pin
7	64006	Jaw Housing Coupler	*47	R1-9X19	O-Ring Seal	*91	31451	O Ring
8	63014	Nut	*48	R2X15	O-Ring Seal	92	630BS3X6	Screw
*9	11520	X-Ring Washer (2)	49	63016V	Trigger Stem	93	400031	Pin
*10	11558	X-Ring Seal (2)	*50	02197	O-Ring Seal (3)	96	630W18	Washer
13	64051VW	Hydraulic Plunger w/Bush Screw	51	63009	Trigger Bush	97	68036AK	Valve Kit
*14	P2224U	O-Ring Seal (#P2224)	*52	680RW13	O-Ring Seal	98 630090V Air Valve Bush Ass'y		
*15	48022	O-Ring Washer	59	64039	Valve Tube	Content:		
16	64002V9	Hydraulic Section Assy	61	63079	Bush	47	R1-9x19	O Ring Seal
17	630M5	Oil Plug	*62	35039	O-Ring	48	R2X15	O Ring Seal
*18	R4X2	O-Ring Seal	63	25018B	Roll Pin	49	63016V	Trigger Stem
*19	630W5	Fill Washer	*64	25022	O-Ring Seal	50	02197	O Ring Seal (2)
20	10453B	Hyd. Return Spring	*65	R18X2	O-Ring Seal	51	63009	Trigger Bush
*24	02170	O-Ring	*66	R266X24	O-Ring Seal	67	630M3	Screw
26	63003V	Hydraulic Handle	67	630M3	Screw	68	630W3	Washer
*27	630356	O-Ring Seal	68	630W3	Washer (2)	99 63052G0 Air Suction Valve Bush Ass'y		
*28	10554	X-Ring Seal (2)	*69	R4X15	O-Ring	Content:		
*29	10558	O-Ring Washer (2)	*70	R6-4X15	O-Ring (2)	68	630W3	Washer
*30	63032	Pipe Washer	71	63052G	Valve Bush	69	R4X15	O-Ring (4X1.5)
31	64057	Screw Plug	72	63060	Rubber Plug	70	R6-4X15	O-Ring (2)
32	64022	Plunger Rod	*73	R9X15	O-Ring	71	63052G	Valve Bush
33	63030	Cushion	*75	R6X12	O-Ring	88	63053G	Valve Stem
34	63020	Piston	78	64078	Rubber Washer	89	63089	Lever
*35	R5X15	O-Ring Seal	79	62081B	Nozzle	91	31451	O-Ring (5x1)
*36	48047	Washer	*80	02116	O-Ring	92	630BS3X6	Screw
37	48048	Nut	81	62010TVS	Screw Plug w/Tube	Pull rivets 1/8", 5/32". Please change #5 (#11507)		
*38	R70X57	O-Ring Seal	*82	R2X1	O-Ring	& replace with #22(#55080), pull 3/16" rivets,		
39	64008	Cylinder Cup	83	62073	Regulator	change #5 & replace #21 (#55007/1) * Repair kit		