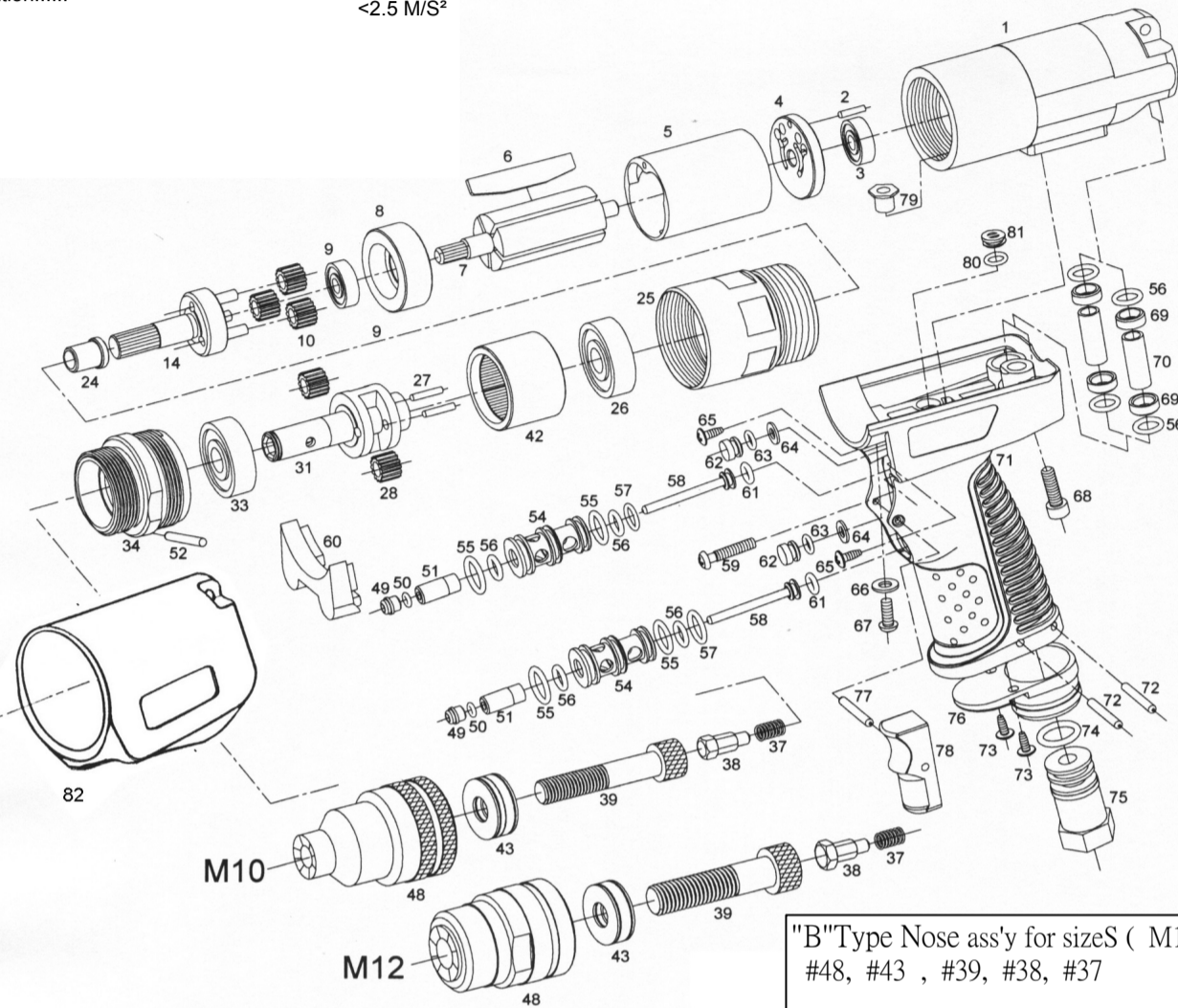




THE FUSION OF PRODUCTION  
AND TECHNOLOGY™

**SPECIFICATIONS**

Max. Rivet Nut Setting Capacity.....	M12, 1/2-13
Free Speed.....	200RPM
Weight.....	1.3KGS
Avg. Air Consumption.....	5 CFM
Air Inlet.....	1/4"NPTF
Mini-Hose Size.....	3/8"
Sound Pressure.....	86dBA
Vibration.....	<2.5 M/S <sup>2</sup>



"B"Type Nose ass'y for sizeS ( M10, M12,1/2-13 ) :  
#48, #43 , #39, #38, #37

11/2007A

Index No.	Part No.	Description
1	300360	Motor Housing
2	P2514	Spring Pin
3	25004	Ball Bearing
4	300114	Rear Plate
5	300109	Cylinder
6	300107	Rotor Blade (6)
7	300102	Rotor (8T)
8	300108	Front Plate
9	608	Ball Bearing
10	35018B	Planet Gear(18T) (3)
14	35011A	Planet Cage(7T)
24	35016A	Bushing
25	300115	Housing
26	35060	Ball Bearing
27	35059	Planet Pin (2)
28	35018B	Planet Gear(18T)(2)
31	35010W	Planet Cage
33	35069	Ball Bearing
34	35014	Screw Housing
37	35076	Spring
38	600010	Hexagon Bit M10
	600B12	Hexagon Bit M12

Index No.	Part No	Description
39	M10015	Bolt M10
	M12175	Bolt M12
42	35012A	Internal Gear
43	35065	Needle Bearing M10
	NB1226	Ball Bearing M12
48	60010M	Nut Anvil M10
	60012M	Nut Anvil M12
49	300061	Sleeve Bushing (2)
50	R3-2X13	O-Ring(Ø3.2X1.3) (2)
51	30006	Sleeve (2)
52	35029	Pin
54	30005	Throttle Bushing (2)
55	R115X2	O-Ring(Ø11.5X2) (4)
56	R7X18	O-Ring(Ø7X1.8) (8)
57	R10X19	O-Ring(Ø10X1.9) (2)
58	30007	Valve stem (2)
59	BSM5X25	Screw
61	R5X19	R5X19(Ø5X1.9) (2)
62	30086	Plug (2)
63	R5X15	O-Ring(Ø5X1.5) (2)
64	R8X65X16	Washer(Ø8X6.5x1.6) (2)
65	WS3X10	Screw (2)

Index No.	Part No	Description
66	300W5	Washer
67	BSM5X12	Screw
68	HSM5X20	Screw
69	30011	Bushing (4)
70	30025	Tube (2)
71	30003	Handle
72	SP3X25	Roll Pin (2)
73	WS3.5X15	Screw (2)
74	25203	O-ring(P12X2.4)
75	30018	Air Inlet Bushing
76	30027	Diffuser Exhaust
77	SP2.5X20	Pin
78	30012	Trigger
79	300M5	Nut
80	R6X15	O-Ring(Ø6X1.5) (2)
81	30009	Plug (2)
***ACCESSORIES ***		
*	T1010S	Air Regulator (T1010B)
*** OPTIONAL ACCESSORY ***		
60	30059	Rubber Cap
82	30091	Rubber Cover for Housing