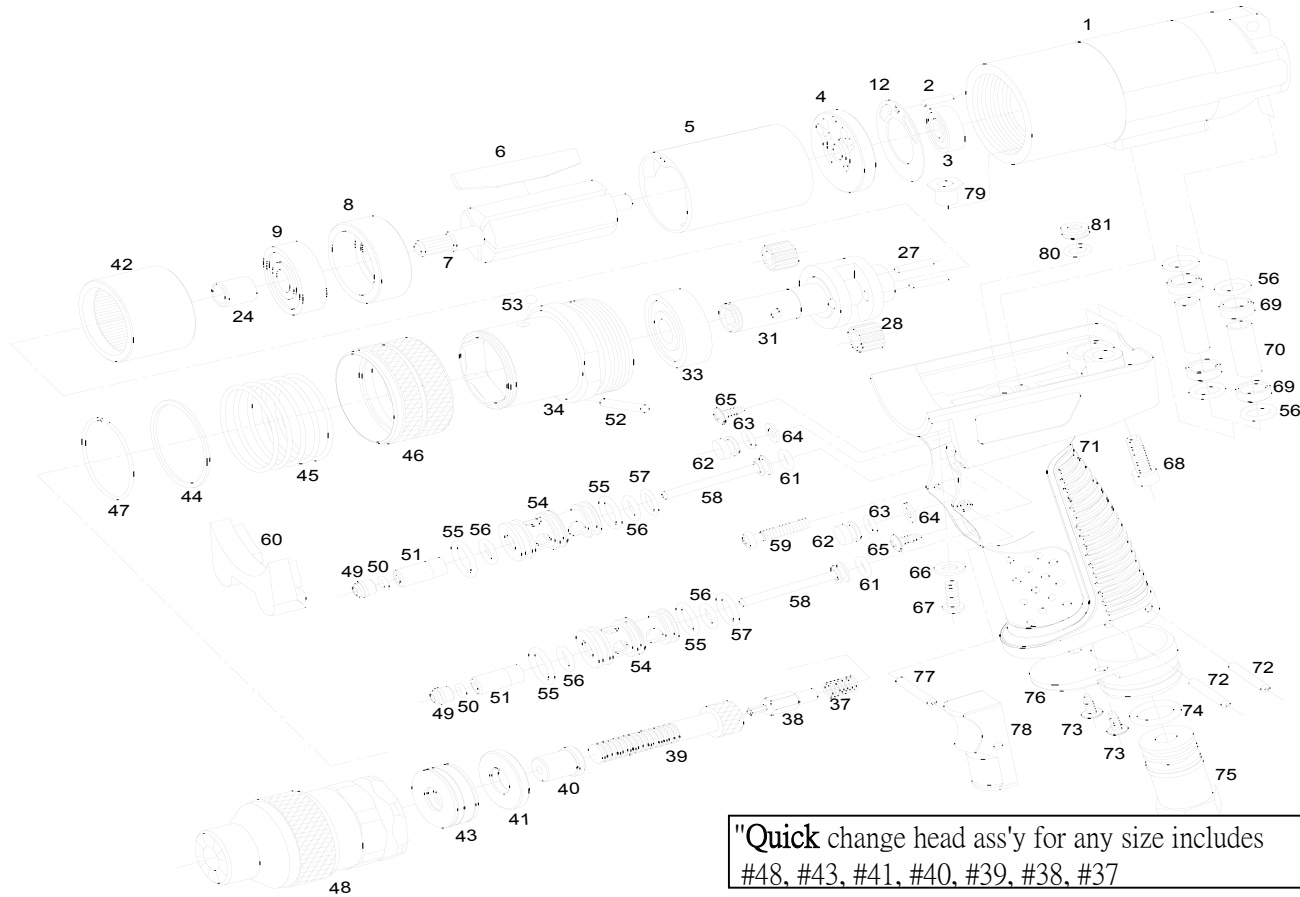


SPECIFICATIONS

Max. Rivet Nut Setting Capacity.....	10-24, M5
Max. Speed.....	1800RPM
Weight.....	0.95KG
Avg. Air Consumption.....	5 CFM
Air Inlet.....	1/4"NPTF
Mini-Hose Size.....	3/8"
Sound Pressure.....	86DBA
Vibration.....	<2.5 M/S ²



THE FUSION OF PRODUCTION
AND TECHNOLOGY™



"Quick change head ass'y for any size includes #48, #43, #41, #40, #39, #38, #37

Index No.	Part No.	Description
1	3002000	Motor Housing
2	P2514	Spring Pin
3	25004	Ball Bearing
4	25003	Rear Plate
5	35009	Cylinder
6	25007H	Rotor Blade (5)
7	200002	Rotor
8	22008	Front Plate
9	B6002	Ball Bearing
12	23211	Motor Gasket
24	HK0810	Needle Bearing
27	35059	Planet Pin (2)
28	35018B	Planet Gear(18T) (2)
31	35010W	Planet Cage
33	35069	Ball Bearing
34	60074	Q-chang Housing
37	35076	Spring
38	600003	Hexagon Bit M3
	600004	Hexagon Bit M4
	600005	Hexagon Bit M5
	600632	Hexagon Bit 6-32
	600832	Hexagon Bit 8-32
	601032	Hexagon Bit 10-32,10-24
39	W6032	Bolt 6-32
	W08032	Bolt 8-32
	W10032	Bolt 10-32
	M03005	Bolt M3
	M04007	Bolt M4
	M05008	Bolt M5
	M06010	Bolt M6

Index No.	Part No	Description
40	60093	Bushing M3
	60094	Bushing M4
	60095	Bushing M5
	60096	Bushing M6
	60094	Bushing 6-32,8-32
	60095	Bushing 10-24,10-32
41	60063	Washer M3,M4,M5,M6
	60060	Washer 6-32,8-32,10-24
42	35012A	Internal Gear
43	35065	Needle Bearing M3,M4,M5,M6
	35065	Needle Bearing 6-32,8-32,10-24
44	60032	Washer
45	60076	Spring
46	60072	Q-chang Clamp
47	60075	Ring
48	600M3	Nut Anvil M3
	600M4	Nut Anvil M4
	600M5	Nut Anvil M5
	600N10	Nut Anvil 10-24,10-32
	600N6	Nut Anvil 6-32
	600N8	Nut Anvil 8-32
49	300061	Sleeve Bushing (2)
50	R3-2X13	O-Ring(Ø3.2X1.3) (2)
51	30006	Sleeve (2)
52	35029	Pin
53	60053	Steel Ball
54	30005	Throttle Bushing (2)
55	R115X2	O-Ring(Ø11.5X2) (4)
56	R7X18	O-Ring(Ø7X1.8) (8)
57	R10X19	O-Ring(Ø10X1.9) (2)
58	30007	Valve stem (2)

Index No.	Part No	Description
59	BSM5X25	Screw
60	30059	Rubber Cap
61	R5X19	O-Ring (Ø5X1.9) (2)
62	30086	Plug (2)
63	R5X15	O-Ring(Ø5X1.5) (2)
64	R8X65X16	Washer(Ø8X6.5x1.6) (2)
65	WS3X10	Screw (2)
66	300W5	Washer
67	BSM5X12	Screw
68	HSM5X20	Screw
69	30011	Bushing (4)
70	30025	Tube (2)
71	30003	Handle
72	SP3X25	Roll Pin (2)
73	WS3.5X15	Screw (2)
74	25203	O-ring(P12X2.4)
75	30018	Air Inlet Bushing
76	30027	Diffuser Exhaust
77	SP2.5X20	Pin
78	30012	Trigger
79	300M5	Nut
80	R6X15	O-Ring(Ø6X1.5) (2)
81	30009	Plug (2)