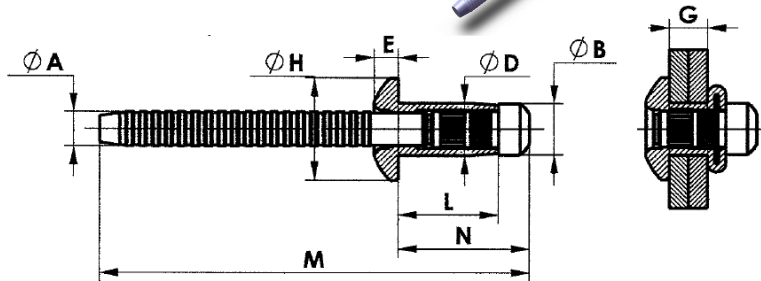
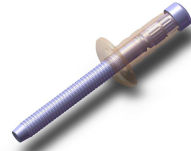


# ORLOCK



## Technical Data



SIZE	RIVET CODE	RIVET LENGTH L +/-0.012	GRIP RANGE G	A DIA. +/-0.003	B DIA. +/-0.004	D DIA. +/-0.002	E +/-0.012	H DIA. +/-0.016	M +/-0.079	N +/-0.020
5/16"	L78135 P	0.531	0.157-0.276	0.202	0.309	0.307	0.147	0.630	2.126	0.728
	L78165 P	0.650	0.276-0.394						2.244	0.846
	L78195 P	0.768	0.394-0.512						2.362	0.965
	L78225 P	0.886	0.512-0.630						2.480	1.083
	* L78255 P	1.004	0.630-0.748						2.598	1.201
	* L78285 P	1.122	0.748-0.866						2.717	1.319
	* L78315 P	1.240	0.866-0.984						2.835	1.437

RIVET CODE	SHEAR STRENGTH, Lbs/kgf		TENSILE STRENGTH, Lbs/kgf	
	min.	nom.	min.	nom.
L78135 P	3021 / 1370	3109 / 1410	1764 / 800	2051 / 930
L78165 P / L78315 P	3308 / 1500	3528 / 1600	1764 / 800	2051 / 930

BODY MATERIAL	LOW CARBON STEEL
MANDREL MATERIAL	CARBON STEEL
FINISH	ZINC COATED - Cr (VI) FREE PASSIVATION
RECOMMENDED HOLE SIZE	0.315 - 0.327 inch



Fastening Solutions

**ORNIT BLIND RIVETS**

Tel: +972 8 6610222, Fax: +972 8 6611380

[www.ornit.com](http://www.ornit.com)